



SMHA Annual General Meeting April 24, 2010



Agenda

- Welcome
- Moment of Silence for Bill Ryall
- Minutes of AGM (2008-2009)
- President and Committee Reports
- Appreciation Awards
- Draw for Free Registration
- Pizza lunch
- Amendments to Constitution
- Election of Officers
- Adjournment



Minutes of the AGM 2008-2009

- Motion to adopt the minutes, Seconded by?
- Errors or Omissions
- Business arising from the minutes
- Vote on the Motion to adopt the minutes



President & Committee Member Reports

- President Report – Craig Goodwin
- Support Services- Glenn Austin
 - Registration – Lynda Partner, Beth Girardi
 - Communications – Lynda Partner
 - Clinics, Tournaments – Glenn Austin
- Hockey Programs
 - Competitive – Mike Clarkson
 - Development- John Lesage
 - House – Rick Rozon (Craig Goodwin)
- Operations – Craig Goodwin
 - Ice – Peter Burke
 - Referees – Mike Michaud (regrets)
 - Equipment – Marty Rukavina
- Finance – Kerry Hisko
 - Finance Report



President's Report

Craig Goodwin- President



Stats - The Year in Summary

- 1175 Registered Players
 - 2.2% growth (1151 in 08/09)
 - Expect more growth in 10/11 with new housing developments, girls hockey
- 68 Teams (3 more than 08/09)
 - 21 (21) Development
 - 38 (35) House (LC/Kanata)
 - 9 Competitive
- Team Successes
 - Comp: 7 of 9 in playoffs
 - House: 49% better than .500



- Competitive (B league)
 - 2 league champions
 - 1 A and 1 B playoff champion
- House (Lanark Carleton/Kanata)
 - 2 (4) league champs
 - 2 (3) playoff champs
 - 10 (3) finalists



Achievements/Activities/Changes

- Ice
 - Ice shortage was noticed across all divisions, we have grown by 7 teams in 2 years with same ice
 - No ice availability to cover shortage, will look at increasing roster sizes in house, not cap registration
 - City ice review in May 2010 – rebalancing according to need scheduled for 2011-12, we should see increase in allocation as we are lowest in City (per participant)
- Competitive
 - New round robin playoff format in B league unsuccessful
 - Extremely small **number of** requests for transfers to other B teams compared to last year
 - **“A”** league introduced to Minor Atom (Silver Seven) for 2009-10, 2 teams for 2010-11
- Other
 - Non-checking hockey - reduction in teams due to Bytown league team balancing
 - Challenging year for on/off ice incidents, we need to be better
 - Sens Alumni Game reintroduced – Thanks to Adrienne Baxter!
 - Canteen saw huge jump in business, keep it going! And thanks to Naz!
 - Jersey replacement program extended to Novice mid-season
 - LCMHL constitutional amendments must be submitted by April 25th (AGM is May 11th)
 - D4 constitutional amendments must be submitted asap (no date yet for AGM)





Events

- **Sens Alumni Game** – We reintroduced this event and **it** was a huge success, raising over \$3000 for the Sens Alumni foundation. The game was good too.....better luck next time boys!!
- **Hockey Day in Canada** – Many teams participated throughout SMHA, media coverage, excellent grassroots event, smiles everywhere and well attended
- **Bell Capital Cup** – Many thanks to all the volunteers, excellent success with tremendous demand for participation. Special thanks to Kim Morin and her group of volunteers!
- **Rink for Pink** – Pearl Dresser organized this special event benefitting the Ottawa Regional Cancer Foundation. Congrats to the Atom A Rebels and Rough Riders!
- **Bantam B1 and B2 exhibition game** at Scotia Bank Place, collected a truckload of food for the Stittsville Food Bank, and \$800 for the Rene Faucher Trust. Thanks to all!
- **It shouldn't hurt to be a child** tournament at Stittsville Arena – thanks Dave McCormick for organizing this!



Review and Focus for 2009-10

- Financial Summary
 - Final deficit of -12K for last year, projected surplus of 18K for this year
 - Cash reserves at \$75K (very good shape)
 - HST to be added to ice costs for 2010-11 (extra 8% on top of City increase)
 - No increase in registration fees this year
- Challenges
 - Many management council positions to fill - Tournament Coordinator, Communications, Fundraising and Sponsorship needed (AGAIN!!!!)
 - We must use our resources on the website much better (SMHA, LC, ODMHA, etc)
 - ICE ICE ICE (we must do a better job using what we have)
- Focus for 10-11
 - Better team balancing within age group divisions (some disparity this year)
 - Evaluations will primarily focus on skills in Novice – Peewee
 - Evaluations will focus on game play in Bantam – Midget
 - Compressed development program for Novice, full entry into LCMHL for B/C
 - Possible additional intake of Girls at IP and Novice (stay tuned – Cathy Bureau)



President's Note

Last year in this space I stressed that the overall success of the SMHA is assured only through our collective dedication we show as a team as we work to make hockey happen in our community. This is especially true now as the past year has presented its challenges in the form of evaluations, discipline and ice issues to name a few.

For the upcoming year, we must take our past experiences in a positive light and work even harder to make next year better than ever. Like we do for our children, we must encourage ourselves to work harder and smarter, and to learn as we go.

We will only achieve success by working together and moving forward, guiding ourselves with principles of fair play, reason, compassion and undoubtedly the passion that the game exudes within us.

Remember - We cannot change the goals that go in our own net, but we can work together as a team to score the goals that will win the game, and that's what your volunteer team strives to do with the support of its members.....



Support Services

Glenn Austin





Registration

- **Registration**
 - Numbers Generally Up for the Association
- **2009-2010 Registration**
 - SMHA is going with **ONLINE REGISTRATION** with Hockey Canada
Notice will be **emailed to all members, posted on the SMHA website**
and advertised in **the Stittville News**. Exact timing is unknown
 - Payment date will be August 1st 2010
 - Walk In Registration will still be held; will be **posted on the SMHA website** and in **the Stittville News**



Risk and Safety

- SMHA Speak Out Policy
 - SMHA requires all Team Staff (Coach, Assistant Coach, Trainer, On Ice Assistants and Manager), anyone directly involved with a team who has exposure to the players, to complete the Speak Out course
 - All certified coaches must participate in a Speak Out clinic prior to the first league game
 - All registered coaches will be validated with the ODMHA database to confirm their eligibility
 - One Speak Out course in fall with 90 attendees (SMHA and others)
 - Speak Out Course will be held in the Fall 2010
- Discipline Hearings
 - Related to **Code of Conduct** – Very small number for 2009-10
- Free Level 2 (first aid) Course offered to all SMHA trainers, 23 attended



Support Services

- Communications
 - SMHA Newsletter – **THANKS** to our Roving Report, Lynda Partner
 - SMHA Website: <http://www.stittsvilleminorhockey.com>
- Clinics
 - Offered in 2009-10
 - Trainer Clinic
 - Speak Out Course
 - St. John's Ambulance Course for Trainers
- Picture Day
 - Picture Day. SMHA gave a composite team/player photo to each child
- Tournaments
 - “It Shouldn't Hurt to Be A Child” IP/Novice December 2010



Hockey Programs - Competitive

2009/2010 Summary

Mike Clarkson
Director Competitive, SMHA



2009-10 Competitive Teams

Level	Coach	Players Attending Tryouts	Regular Season Standings	Playoff Results
Minor Atom	Craig Heer	35	6th of 13	
	Pat Laflamme		8th of 13	
Major Atom	Dean Taylor	36	3rd of 13	Semi Finals
Minor Peewee	Tim Sheehan	34	14th of 14	
Major Peewee	Dave Jansen	26	8th of 12	
Minor Bantam	Tony Costantini	25	10th of 13	B Pool Winners
Major Bantam	Marty Sheehan	26	1st of 13	Champions
Minor Midget	Buzz Murray	22	1st of 12	
Major Midget	Tom Band	24	3rd of 12	
Grand Total		228		



2009-10 Tournament Highlights

- **Minor Atom Black**
 - Peterborough Lift Lock Tournament Finalist, North York Knights Finalist
- **Major Atom**
 - Mid Season Showdown Finalists, North York Knights Champions
- **Major Pee wee**
 - Mid Season Showdown Finalists, Athens Tournament Champions
- **Minor Bantam**
 - North York Tournament Finalists
- **Major Bantam**
 - Mid Season Showdown Champions, Kemptville Tournament Champions
- **Minor Midget**
 - Mid Season Showdown Champions, North York Knights Champions, CanAM Lake Placid U16 Champions
- **Major Midgets**
 - Mid Season Showdown Champions



2009-10 Program Highlights

- September conditioning camp attended by 176 players, down 3 from previous year
- Tryouts attended by 228 players, down 10 from previous year
- Bell Sensplex Mid Season Showdown tournament drew 76 teams and is now the largest Sensplex tournament
- All 9 teams attended the North York Knights tournament



Competitive Club Finances

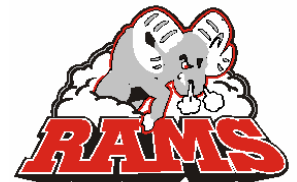
- Dedicated goalie program replaced with Team Development fund and well used
- Home jerseys were replaced
- Sensplex tournament fees paid for by the RAMS **Competitive** association
- City ice rate increases should be absorbed with no impact

Stittsville Rams				
Profit and Loss				
June 1, 2009 to April 16, 2010				
	2007-2008	2008-2009	2009-2010	2009-2010
	Actual	Actual	Actual	Budget
Expense				
Regular Season Ice	\$ 69,169.03	\$ 64,066.69	\$ 72,830.19	\$ 72,350.00
Sensplex Ice	50,665.62	51,581.25	67,144.49	63,100.00
Player development	7,630.00	2,440.00	2,877.50	5,000.00
Try-out jerseys	4,142.96	5,006.35	3,546.96	3,500.00
Exhibition refs	822.00	988.00	158.20	1,150.00
Pucks	484.50	393.24	301.71	300.00
Socks + C's & A's	2,981.49	3,817.82	2,341.46	2,450.00
Police Checks	-	-	-	1,200.00
B League Fees	2,700.00	2,700.00	2,700.00	2,700.00
Referees B League	12,000.00	11,100.00	12,310.54	11,000.00
Equipment Replacement	5,836.00	5,150.99	13,969.50	15,400.00
Photos	1,085.85	1,240.80	1,265.25	1,200.00
Insurance	6,540.00	5,292.00	6,800.00	6,800.00
Advertising	213.70	-	-	400.00
Bank charges	228.69	130.16	173.49	300.00
Office supplies/admin.	-	519.75	682.50	400.00
Miscellaneous	1,209.00	-	100.00	1,000.00
Sensplex Tourney Fees	-	-	6,705.00	-
Training	-	1,975.00	2,680.00	-
Rams pins	348.04	240.00	138.99	300.00
Total	\$166,056.88	\$156,162.05	\$196,447.80	\$188,550.00
Revenue				
Tryout fees	\$ 16,015.00	\$ 16,590.00	\$ 15,820.00	\$ 16,000.00
Conditioning fees	9,390.00	8,125.00	8,115.00	9,000.00
Silver Seven offload	3,328.62	3,328.62	3,328.62	3,000.00
SMHA fees	70,800.00	74,200.00	87,723.00	74,500.00
RAMS fees	74,970.00	74,460.00	75,480.00	82,000.00
Miscellaneous	-	-	500.00	-
Surplus draw down	-	-	-	4,050.00
Total	\$174,503.62	\$176,703.62	\$190,966.62	\$188,550.00
Excess of rev. over exp.	\$ 8,446.74	\$ 20,541.57	\$ 5,481.18	\$ -
Carry forward surplus	-	8,446.74	28,988.31	24,938.31
Accumulated surplus	\$ 8,446.74	\$ 28,988.31	\$ 23,507.13	\$ 24,938.31



Thanks to all the RAMS Competitive Volunteers

- Mike Clarkson – Director (returning as convener)
 - Jeff Fitch – Convener, Hockey Operations (not returning)
 - Tim Sheehan– Convener, Administration (returning as Director)
 - Leo Roberts– Ice Scheduler (not returning)
 - Dave Benn – Finance (not returning)
 - Steve Opie – Equipment (returning)
-
- Thanks to all our coaches, bench staff and team managers





Hockey Programs – Hockey Development

John Lesage



2009/2010 Novice teams

Team	Coach	LCMHL Season	Ice Allotments	
			Half ice	Full ice
C1 – Jedi Lighting	Dion Pike	2 nd	29	5
C2 – Scorpions	Eric Wolf	4 th	31	5
C3 – Vipers	Rob Cooke	3 rd *	29	6
B1 – Capitals	Shane Brown	2 nd *	28	6
B2 – Bombers	Jim Walker	8 th	28	8
B3 – Dragons	Jamie O’Hare	4 th	30	7
B4 – Beagles	Tim Power	5 th	25	10
B5 – Predators	John Hughes	7 th	25	8
A1 – Stallions	Denis Chouinard	1 st *	16	10
A2 – Red Wings	Dave McGahan	5 th	21	6
A3 – Knights	Mike McQuade	6 th *	21	7

A special thank you to all of our coaches and team volunteers for a great season!

* Indicates playoff finalists



Development Program - Review of 2009/2010

Initiation Program

- Kevin to provide

Novice Program

- Total of 171 players registered, 160 skaters and 11 dedicated goalies
- Outside evaluators brought in for all evaluations
- Coaching Development Program was implemented with all coaches teaching the 12 hour Strasbourg Program at the beginning of the season
- Novice B and C played in LCMHL, in a Development division versus WCMHL
- Bi-weekly dedicated goalie conditioning and clinics
- Hosted 2 Hockey Development Pub nights, raised over \$100 per team
- SMHA had a team in all three LCMHL division play-off finals, winning the Novice A final! Congratulations to the Stittsville Knights!
- Stittsville Knights and Stittsville Stallions were the big winners at 2 tournaments this year



Development Program - 2010/2011 Plans

Initiation Program

- Kevin to provide

Novice Program

- Will repeat having outside evaluators do all evaluations – no changes after successful results in 2009/2010 season
- Repeat the Coach Development program at the start of the season, earlier start running condensed program in 4 weeks
- Moving the Novice B and C team into the regular LCMHL schedule – 20 games versus the 10 game schedule in the Development Division in 2009/2010
- Continuation of the specialized goalie clinics



Hockey Programs – House

Rick Rozon



House Program Highlights

- 45 teams in LCMHL, 4 in Kanata
- 2 league champs, 2 playoff champs, 10 finalists
- 49% (24 teams) at .500 or better, 20% as playoff finalists (good heart!)
- Unloading effect of Competitive transfers and NC had some adverse effects

<u>Division</u>	<u>Conveners</u>
Atom	Colin McKeown
Peewee	Peter Valters John McGetrick
Bantam	Rick Buffone Steve Roud
Midget	Mark Cordina
Juvenile	Rory Bradley Dave Waterhouse

***Special thank you to our
Conveners
“Where the real work
takes place”***



House Program - Atom

<u>Team</u>	<u>Season</u>	<u>Playoffs</u>	<u>Coach</u>
Atom C1			John Sloan
Atom C2			Mark Yakabuski
Atom B1			Paul McMahan
Atom B2			Dave McCormick
Atom B3			Alex McDonnell
Atom B4			Kelli Warren
Atom A1			Yves Lessard
Atom A2			Chris Burns



House Program – Pee wee

<u>Team</u>	<u>Season</u>	<u>Playoffs</u>	<u>Coach</u>
Pee Wee C1			Mike McAllister
Pee Wee C2			Bill Hunter
Pee Wee B4			Mark Saucier
Pee Wee B3			John McGetrick
Pee Wee B2			Kevin McCausland
Pee Wee B1			Gord Pederson
Pee Wee A2			Derrick Moore
Pee Wee A1			Scott Bradley



House Program - Bantam

<u>Team</u>	<u>Season</u>	<u>Playoffs</u>	<u>Coach</u>
Bantam C1			John McCauley
Bantam C2			Mark Gardner
Bantam B1 NC			Cary Connolly
Bantam B1 ck			Mark Stackhouse
Bantam B2 ck			Dean Lee
Bantam B2 NC			Rick Buffone
Bantam B3 CK			Steve Roud
Bantam A1			Ian McNaughton
Bantam A2			Steve Bisson/Jody Royer



House Program – Midget/Juvenile

<u>Team</u>	<u>Season</u>	<u>Playoffs</u>	<u>Coach</u>
Minor Midget B2			Frank Chapman
Minor Midget B1			Bart Devine
Midget B NC3			Rick Perry/Richard Bureau
Midget B NC2			Ian Watson
Midget B NC1			Paul Treboutat
Midget B3 CK			Mark Cordina
Midget B2 CK			Steve Hawkins
Midget B1 CK			Dan Hodge
Midget A3			Steve Tranmer
Midget A2			Dale Hein
Midget A1			Tyler Johnson
Juvenile 1			Rory Bradley
Juvenile 2			Rick Rozon



House Program – in Review

- Review of 2008-2009
 - Atom - Lowest numbers of any division, as a result of Silver Seven minor atom team. Practice ice was scarce at times but division was caught up by year's end
 - Peewee - Low numbers with goalie shortage. Extraordinary high number of players in competitive, but still strong age group overall
 - Bantam - Continued with Bantam C, NC B team in Kanata. Very competitive age group, B group was very strong. Inappropriate evaluation methods resulted in redrafting Bantam "A"
 - Midget - Good competitiveness throughout, we had a weak A team that turned it around come playoffs. B division extremely rough and tumble and was closely watched by officials and coaches. Had some ice issues in January due to human error and rectified as best as possible towards end of season
 - Juvenile - Good momentum, went to two teams. Benefited from a lot of unusable ice at Midget
- Focus for 2009-2010
 - Atom - Work to re-establish continuation Hockey Development emphasis on skills, skills, skills. Need more goalies, but Novice situation bodes well for future
 - Peewee - All players will be required to take a body checking course prior to tryouts
 - Bantam - Continuation of Bantam C and non-checking program with Kanata, evaluations to be based more on game play
 - Midget - Need to do a better job of equalizing teams, overall division is largest in SMHA



Operations

Vacant – Vice President, Operations

The Team

Referee In Chief – Mike Michaud

Equipment (Jerseys, Etc.) – Marty Rukavina

Referee Scheduler – David Etherington

Equipment (Goalies) - Jim Rossell

Ice Scheduler – Peter Burke



Ice Review

- Review of 2009-2010
 - Over 2200 hours of ice consumed
 - Planned \$350K, actual \$348K
 - Almost 1500 games in LCMHL
 - Unusable ice issues
 - THANKS TO PETER BURKE
- Focus for 2010-2011
 - City ice review was supposed to happen this year, will happen next year
 - SMHA at 49% of ideal ice allocation from City, other associations are over 60%
 - Every team must share ice or run combined practices
 - We will ensure divisional practice is usable on game days
 - Ice costs to increase ~ 10.84% due to HST \$143.97/hour vs. \$159.58/hour





Ice Breakdown

	A	B	C	D	E	F	G	H	I
Division	# of teams	Total Hours Since Sept 1	Ice Used Oct-Mar	Less Home Game Ice (A x H)	Practice Ice for Division (C-D)	Practice Hours per team (E/A)	Practice Touches per team (F * 2)	Add Games*	Total Touches (G + H)
Initiation	10	284	258	0	258	25.8	51.6	0	51.6
Novice	11	365.5	327	110	217	19.7	39.5	20	59.5
Atom	8	328	293	96	197	24.6	49.3	24	73.3
Peewee	8	317.5	287.5	96	191.5	23.9	47.9	24	71.9
Bantam	9	331.5	295	108	187	20.8	41.6	24	65.6
Midget*	11	458	423	198	225	20.5	40.9	24	64.9
Juvenile*	2	117.5	95.5	36	59.5	29.8	59.5	20	79.5
Totals	59	2202	1979			* Midget and Juvenile are 1.5 hour games			

- Total budgeted touches per team is 60 in the regular season, plus evaluations and playoffs
- Column I should be the minimum per team, if you got less, it's because of unusable ice
- Juvenile was high because they only had 2 teams and used a lot of returned ice from Midget
- Numbers above are what were given to conveners, each team may not be equal due to game conflicts, we will do a better job next year tracking 'away' games
- Detailed explanation of how ice allocations works is available on the SMHA website



Referee in Chief's Report

- Hiring about 10 new officials in 2010-11
- Appointing junior and intermediate level officials as mentors to the new officials (2 officials per mentor) to develop them faster -- all under the supervision of a senior coordinator
- Organizing a Supervision clinic for all of our current and new (some level 2's as well) supervisors
- For officials to be permanently assigned to a higher level of hockey they will now be required to 'pass' supervision(s) at that level. Presently we make this decision at their present level



Equipment

- 2009-2010
 - Atom, Peewee and Bantam got new jerseys, extended to Novice in January
 - Thanks to Marty Rukavina for the last 2 years.....
 - Thanks to Jim Rossell for the last 2 years.....
- Focus for 2010-11
 - Change to “RAMS”, is now complete, “Redmen” is retired
 - SMHA will provide socks to all players
 - Looking for Corporate sponsors for Jerseys
 - All Rep B team wear should have “competitive” below logo
 - Goalie equipment rental program still available
 - ~~– Need two volunteers to be Equipment managers~~



Finance

Kerry Hisko



Last Year's Results Summary

- Revenue increased by almost \$ 100,000 due to many late registrants (higher fee) and fewer withdrawals
- Total number of players slightly higher
- Ice hours purchased was consistent with previous years
- New jerseys for all teams were purchased in the current year
- Forecasted surplus for the year is \$ 19K
- Full Financial Audit as of April 30, 2010 to be completed at a cost of \$6K, end every year ending in odd number thereafter
- Ending cash balance is expected to be \$75,000
- Financials will be posted on the SMHA website once finalized



Next Year Forecast

- No increase in registration fees for 2010-11
- This despite a 10.84 % increase City ice rates and HST
- Parents will be able to pay the registration fee by Visa if they choose, payment by cheque will also be available, no cash payments will be accepted
- An estimated \$ 15,000 Visa fee will be absorbed by the association
- Other expense line items increased anywhere from 0 to 3%



Profit and Loss Statement - Revenue

	Actual 2008/2009	Forecast 2009/2010	Budget 2010/2011
Revenue			
Registration Revenue	590,935.00	706,833.00	
Registration Withdrawal	-30,840.00	-27,280.00	
Competitive Withdrawals	-128,217.11	-149,114.45	
Net Registration	431,877.89	530,438.55	530,400.00
Misc Income	14,866.20	12,746.56	12,700.00
Total Revenue	446,744.09	543,185.11	543,100.00



Profit and Loss Statement - Expenses

Expense	Actual	Forecast	Budget
	2008/2009	2009/2010	2010/2011
Equipment & Storage	41,343.27	59,649.51	28,200.00
Referee	36,532.60	42,397.30	43,700.00
City Ice	309,068.01	348,022.08	385,700.00
Canteen Lease	2,638.32	2,715.00	2,700.00
Clinics	9,691.11	10,974.46	11,300.00
Advertising	1,483.25	1,462.89	1,900.00
Photography	6,834.24	4,581.72	4,700.00
Administrator	12,647.42	0.00	0.00
Visa Fees		0.00	15,000.00
Professional Fees	0.00	6,000.00	6,180.00
Insurance	30,969.00	35,586.00	36,700.00
LCMHL/District 4 Fees	3,900.00	5,100.00	5,300.00
Office Supplies/Bank Charges	1,038.31	1,299.83	1,300.00
Misc Expense (Halls, Photocopying)	2,318.06	6,644.48	6,600.00
Total Expenses	458,463.59	524,433.27	548,900.00
Surplus/Deficit	-11,719.50	18,751.84	-5,800.00



Amendments To The SMHA Constitution

(please see handouts for exact wording)



Amendments and Motions

Amendment #1 – Add Director at Large Executive Position

Rationale

This position will serve as an ombudsman and a “spare” executive member since they must have been a past executive. This give the person the experience required to step in an fill any role, while also serving as a “go between” for any issues membership may have. Since this position is a “Director” it is expected this person has a hockey background.

Amendment #2 – Change in Audit Requirements

Rationale

The executive feels the current wording is very hard to adhere to and expensive, especially when the VP of Finance role turns over before the term expires. Audits are expensive, but based on the size of our association, we feel it prudent to undertake a full audit every two years.



Amendments and Motions – cont'd

Amendment #3 – Implementation of Non-Checking at House B

Rationale

SMHA has tried to offer both options at A and B over the last few years. This system is extremely hard to implement to ensure a competitive balance between NC and CK. Most associations in ODMHA are already NC in B and we are behind the curve. Renewed focus on fun, skills in a safe environment.

Amendment #4 – Voting Privileges for Transfers In

Rationale

This is to allow voting privileges for those people transferring in to SMHA from another association for a one-year playing basis. Since they play here and most often coach, they should have a say in how the programs are delivered, since they pay the same fees as everyone else.



Amendments and Motions – cont'd

Amendment #5 – Posting of AGM Notices

Rationale

This allows us to take advantage of electronic and local media to post the notice, instead of being restricted to posting a physical notice at all arenas. The season is over and the membership is rarely seen inside an arena after April 1 in any case.

Motion #1 – Honourary Members (Lynda Partner, Kerry Hisko)

Rationale

Kerry is a professional accountant willing to provide his services to the association and we do not want to limit or restrict his involvement should his children decide not to play hockey in the future.

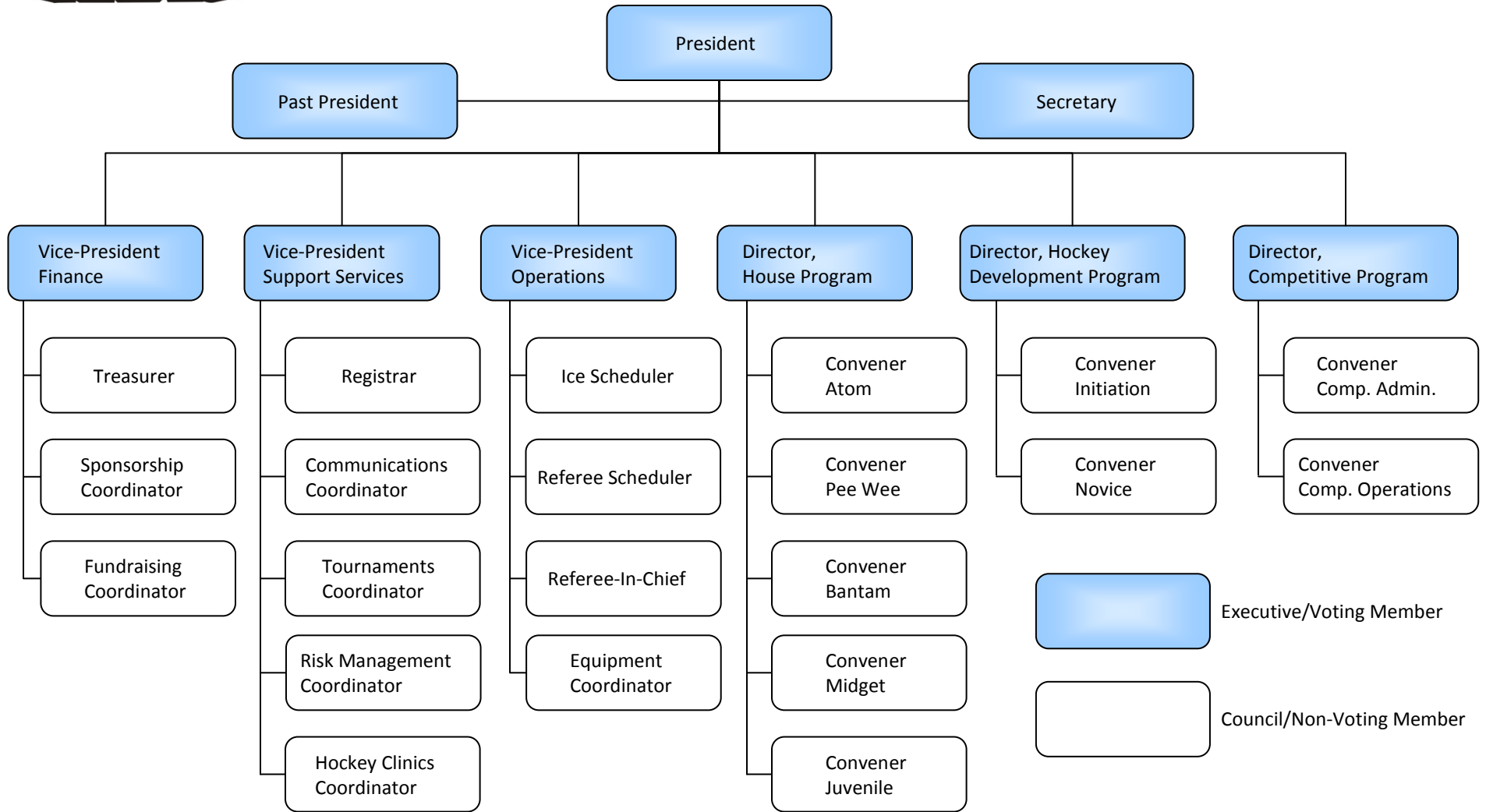
Lynda has worked tirelessly for the SMHA for many years and brings an attitude of professionalism and attention to detail to the management council that benefits us all. Lynda lives in Richmond and receives a transfer to Stittsville for the non-checking program.



Election of Executive Members



SMHA Organization





Election of Executive Positions

	Position	Incumbent	Nominations	Nominated by
1	President (2 Years)	Craig Goodwin	Craig Goodwin	Charlene McEnergy 2 nd Glenn Austin
2	Vice President, Operations (2 Years)	Vacant	Glenn Austin	Craig Goodwin 2 nd Charlene McEnergy
3	Director Competitive (2 Years)	Mike Clarkson (end of term)	Tim Sheehan	Mike Clarkson 2 nd Craig Goodwin
4	Vice President, Finance (1 Year)	Kerry Hisko (appt)	Kerry Hisko	Mike Clarkson 2 nd Craig Goodwin
6	Vice President, Support Services (1 Year)	Glenn Austin	Lynda Partner*	Charlene McEnergy 2 nd Rick Rozon
5	Director, House Program (2 years)	Rick Rozon (end of term)	Open to Floor	
7	Secretary	Charlene McEnergy	n/a	n/a
8	Director, Hockey Development	John Lesage (1 year remaining)	n/a	n/a
9	Past President	Charles Falardeau	n/a	n/a

* Subject to approval as honorary member commencing 2010-11



Nomination and Voting Procedure

- Nomination
 - For the position of : “position”, do we have a nomination? Seconded by?
 - (to the nominee): “name” Do you accept the nomination?
- Voting
 - (If there is only one nominee) By acclamation “name” is elected to the position of “position”
 - (If there are more than one nominee, each nominee will be asked to address the membership and present themselves and their qualifications). 5 minutes for questions
 - (the Membership will be asked to use an election ballot to vote, the votes are collected by the Election chair and counted by two members)
 - By vote “ name” is elected to the position of “position”



Final Remarks
Questions
Motion to Adjourn